



ANSWER KEY

Page 3 : What Does it Mean to be a Junior Ranger?

Y C B E S L C C E R Y H E E G H M D W L E I
 E N C M Q L U T C C C R E A T I V E T A A I
 H X Y W W K Y F W H I K E R V P W X D S D Q
 M Q X E C I N C T J T T W P I S N H W L V L
 K G Y A P G C O A C T Q S H D Y T R L U E U
 S Z I D V K M X W R E S G I Z U E F D F N F
 A R T I S T I C S L I P I F M E E G N T T H
 R X C I T E G R E N E N S T G I F A M H U C
 G I R Q R G M T T B I D G E N K T E S G R T
 U T N E G I L L E T N I G L R E C P G U O A
 P A S S I O N A T E T T F E F S I B O O U W
 U O H I S T O R I A N S I H A Y L C B H S Z
 K N K O D H Z A C Z P W S P L B T Q S T J W
 T S E N O H I P K T Q I S N Q E L S X F C H
 H E L P F U L J W W S V P V F R I E N D L Y

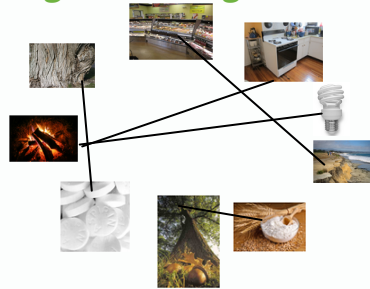
Page 4 : Park Rules

- STAY ON TRAIL
- DO NOT APPROACH WILDLIFE
- DO NOT PICK FLOWERS OR PLANTS
- DO NOT LITTER, PUT TRASH IN GARBAGE BINS
- STAY CLOSE TO AN ADULT
- HAVE CAMPFIRE IN FIRE PITS ONLY
- FISHING AND HUNTING ARE NOT PERMITTED
- DO NOT FEED WILDLIFE
- JUNIOR RANGERS ARE PARK SAFE

Page 8 : Habitats and Ecosystems

- Banana slug -- Redwood
- Anemone -- Intertidal
- Western fence lizard -- Scrub/Chaparral
- Coast live oak -- Oak woodland
- Steelhead trout- Riparian
- Checkerspot Butterfly -- Grassland

Page 12: Linking the Past and the Present



Page 19: Fire Ecology Word Choice

- A **crown** fire is more intense...
- Fuel** buildup increases the risk ...
- A **prescribed** burn is done intentionally...
- The red-colored **manzanita** is an example...
- After a fire burns away the brush, it leaves behind **ash**...

Page 20 : Animal Diner

- Red Tailed Hawk: #1
- Gray Fox: #3
- Mule Deer: #2
- California Quail: #4
- Western Fence Lizard: #6
- Ranger: #7
- Garter Snake: #5

Page 23 : Tree Rings

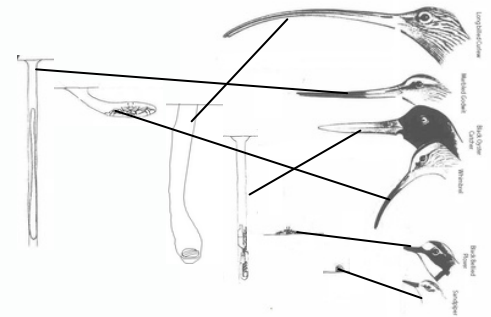
About 54 years old

Page 24 : Read the Tides

Good time to go: Any negative tide- like the 8th around 3pm

Page 27: The Best Beaks

Note: other answers work, but these are good matches!



Page 34: Grassland Crossword

- 1: Bees
- 2: Endemic
- 3: Fence Lizard
- 4: Host Plant
- 5: Nectar
- 6: Serpentine
- 7: Flowers
- 8: Pollinate
- 9: Deer
- 10: Ticks